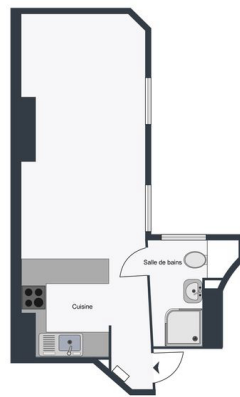


101 rue La Fayette

75010 Paris
floor 5 out of 6
226.69 sqft
21.06 sqm
available from now on



+33 7 85 99 37 74

rent

base rent	EUR 817
additional rent	EUR 178
operational costs	EUR 70
total rent	EUR 1 065
deposit	EUR 995
rent increase reference	38,8 EUR / sqm
notice period	one month



apartment

flooring	parquet
store room	
built-in kitchen	
washing machine	

building

construction year	1900
elevator	

energy

energy efficiency rating D	
date of certificate	20/06/2025
current energy consumption	242 kWh/m ² *a
gas efficiency rating B	
current gas	9 kgeqCO ₂ /m ²

consumption
min annual energy
consumption cost EUR 550
max annual energy
consumption cost EUR 790
energy
consumption 01/01/2021
reference date

distance, meters

closest subway
station Poissonnière
subway 100



